

Bat-series Delta Robot

Bat1600C-S6

It features high speed and agility, high positioning accuracy, and strong power, facilitating high-speed and high-precision flexible production.

Applicable industries

Sorting, handling, loading and unloading, boxing, gluing, and other links in electronics, food, medicine, daily chemicals, logistics, and new energy.

Product features

Rated load	6kg
Working space diameter	1600mm
Repeat positioning accuracy	±0.05mm
Configuration	Standard 3-axis

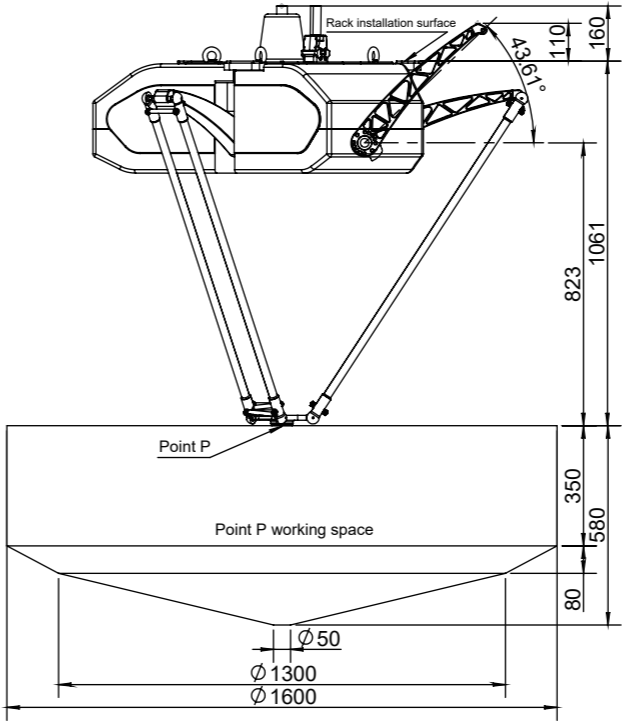


Specification

Bat1600C-S6

Rated load			6kg
Max. load			14kg
Working space diameter			1600mm
Number of axes			3
Repeat positioning accuracy			±0.05mm
25/305/25	0.1kg		0.25s
	1kg		0.31s
	3kg		0.32s
	6kg		0.37s
90/400/90	0.1kg		0.37s
	1kg		0.37s
	3kg		0.42s
	6kg		0.46s
Power supply voltage			Three-phase AC 380 V±10%, 50/60 Hz
Rated power			5.6KW
Ambient temperature			0-45°C
Relative humidity			5-95%
Degree of protection			IP54
Safety			Equipped with monitoring, emergency stop, and installation functions
Radiation			EMC shielding
Installation method			Suspended type
Weight of the robot body			150kg
I/O interface			4-channel configurable digital I/O 8-channel universal digital I/O (8 additional I/O channels can be added) 2-channel encoder input
Ethernet			2
USB			2
RS232\RS485			1
EtherCAT			1
Communication protocol			Modbus-RTU/TCP、Socket
Certification			CE

Working range

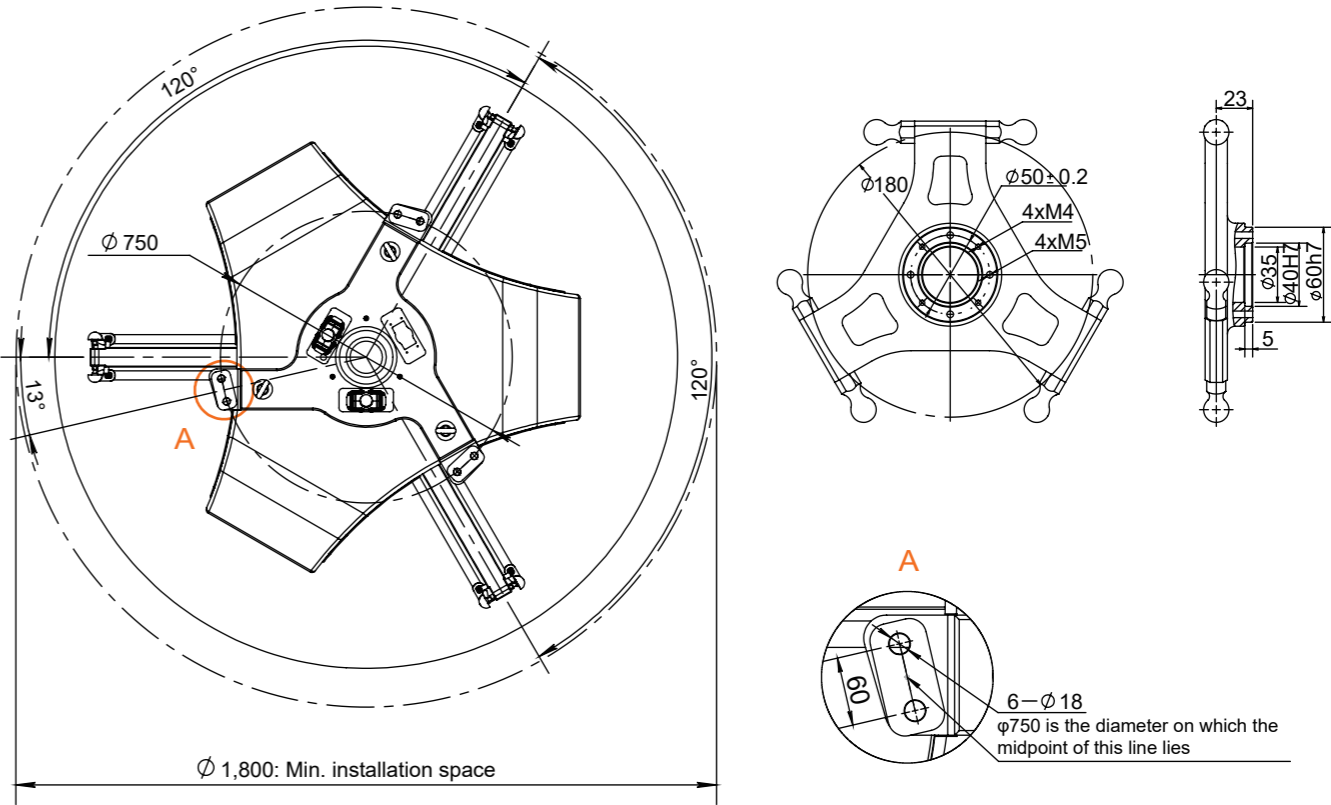


Model

Bat1600C-S6

Distance from installation surface to top of equipment	160mm
Max. upper arm elevation and horizontal plane angle	43.61°
Max. elevation of the upper arm to the height of the installation surface	110mm
Distance from installation surface to upper plane of working space	1061mm
Distance from the reducer shaft center to the upper plane of the working space	823mm
Total height of the upper and lower limits of the working space	580mm
Height of the cylindrical part of the working space	350mm
Height of the conical frustum part of the working space	80mm
Transition diameter of the conical column in the working space	1300mm
Bottom diameter of the conical column in the working space	50mm
Diameter of the circular table part of the working space	1600mm
Min. installation size of the robot body	1800mm

Installation size



*: For specific requirements regarding line selection, interface configuration, and other optional needs, please consult the technicians of RobotPhoenix.

*: Any changes resulting from upgrading our products will not be notified separately.