

Bat-series Delta Robot

Bat1300N-S20

It features high speed and agility, high positioning accuracy, and strong power, facilitating high-speed and high-precision flexible production.

Applicable industries
Sorting, handling, loading and unloading, boxing, gluing, and other links in electronics, food, medicine, daily chemicals, logistics, and new energy.

Product features

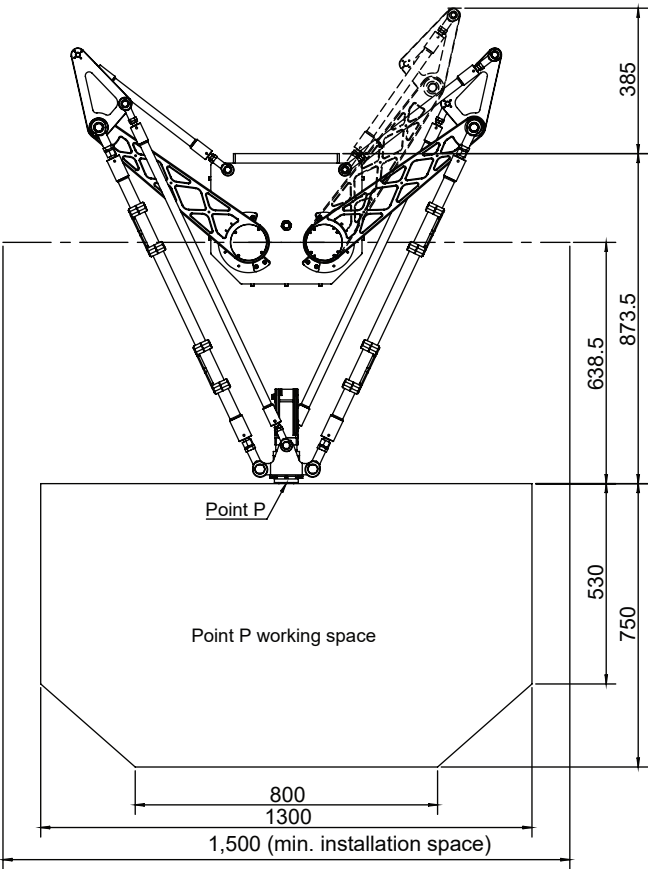
Rated load	20kg
Working space diameter	1300mm
Repeat positioning accuracy	±0.05mm
Configuration	Parallel 2+1 axis



Specification

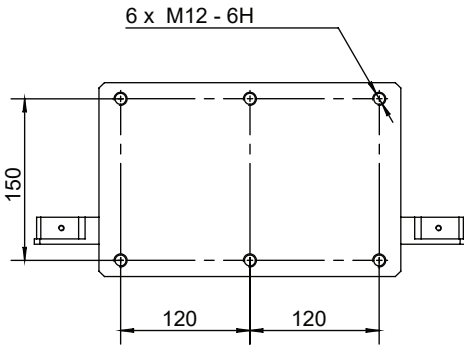
Bat1300N-S20		
Rated load		
20kg		
Working space diameter		
1300mm		
Number of axes		
3		
Repeat positioning accuracy		
±0.05mm		
Angular repeat positioning accuracy		
±0.05°		
25/305/25	0.1kg	0.40s
	1kg	\
	3kg	\
	6kg	0.48s
90/400/90	0.1kg	0.51s
	1kg	\
	6kg	0.59s
	15kg	0.7s
Power supply voltage		
Three-phase AC 380 V±10%, 50/60 Hz		
Rated power		
4.6KW		
Ambient temperature		
0-45°C		
Relative humidity		
5-95%		
Degree of protection		
IP54		
Safety		
Equipped with monitoring, emergency stop, and installation functions		
Radiation		
EMC shielding		
Installation method		
Hoisting		
Weight of the robot body		
0kg		
I/O interface		
4-channel configurable digital I/O 8-channel universal digital I/O (8 additional I/O channels can be added) 2-channel encoder input		
Ethernet		
2		
USB		
2		
RS232\RS485		
1		
EtherCAT		
1		
Communication protocol		
Modbus-RTU/TCP、Socket		

Working range

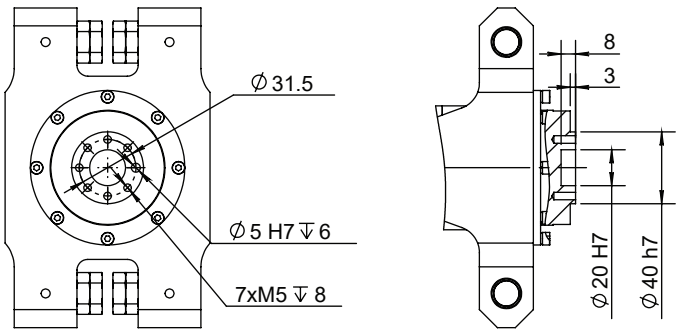


Model	Bat1300N-S20
Distance from installation surface to top of equipment	385mm
Distance from installation surface to upper plane of working space	873.5mm
Distance from the reducer shaft center to the upper plane of the working space	638.5mm
Total height of the upper and lower limits of the working space	750mm
Height of the conical frustum part of the working space	220mm
Bottom diameter of the conical column in the working space	800mm
Diameter of the circular table part of the working space	1300mm
Min. installation size of the robot body	1500mm

Installation size



Rack installation size



Installation size at point P

*: For specific requirements regarding line selection, interface configuration, and other optional needs, please consult the technicians of RobotPhoenix.

*: Any changes resulting from upgrading our products will not be notified separately.