

Bat-series Delta Robot

Bat360M-S0.5

It features high speed and agility, high positioning accuracy, and strong power, facilitating high-speed and high-precision flexible production.

Applicable industries
Sorting, handling, loading and unloading, boxing, gluing, and other links in electronics, food, medicine, daily chemicals, logistics, and new energy.

Product features

Load	0.5kg
Working space diameter	360mm
Repeat positioning accuracy	±0.05mm
Configuration	4th axis under-mounted



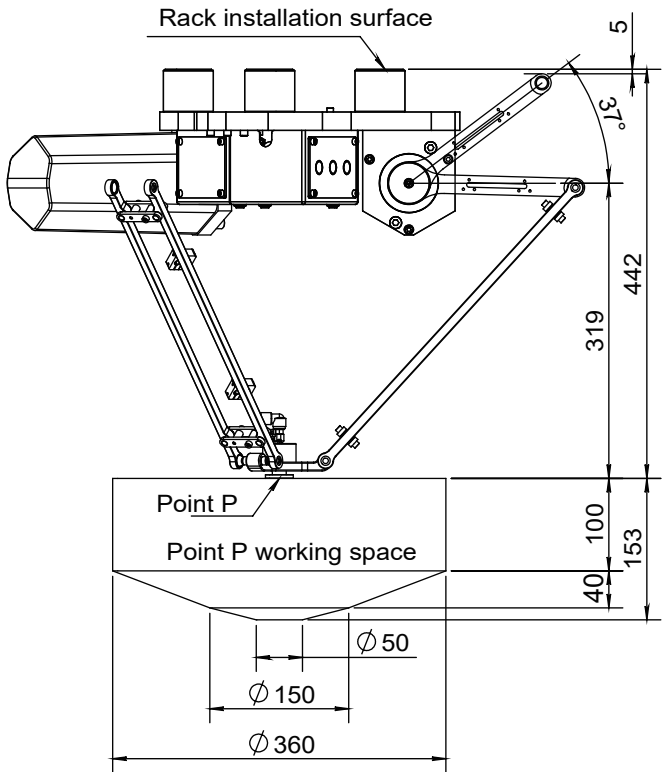
Specification

Bat360M-S0.5

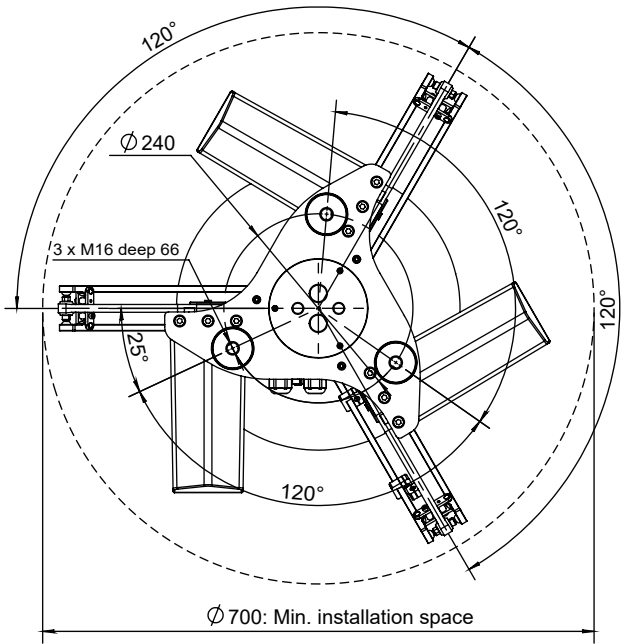
Rated load			0.5kg
Working space diameter			360mm
Number of axes			4
Repeat positioning accuracy			±0.05mm
Angular repeat positioning accuracy			±0.1°
20/100/20	0.1kg		0.19s
	0.5kg		0.19s
25/200/25	0.1kg		0.21s
	0.5kg		0.22s
25/305/25	0.1kg		0.28s
	0.5kg		0.28s
Power supply voltage			Single-phase AC 220 V±10%, 50/60 Hz
Rated power			0.8KW
Ambient temperature			0-45°C
Relative humidity			5-95%
Degree of protection			IP54
Safety			Equipped with monitoring, emergency stop, and installation functions
Radiation			EMC shielding
Installation method			Suspended type
Weight of the robot body			24kg
I/O interface			12-channel universal digital I/O; 2-channel encoder input
Ethernet			2
USB			1
RS232\RS485			1
EtherCAT			1
Communication protocol			Modbus-RTU/TCP、Socket

*: For specific requirements regarding line selection, interface configuration, and other optional needs, please consult the technicians of RobotPhoenix.

Working range

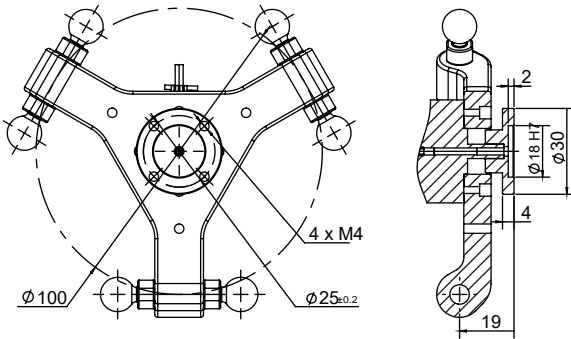


Installation size



Model Bat360M-S0.5

Distance from installation surface to top of equipment	0mm
Max. upper arm elevation and horizontal plane angle	37°
Max. elevation of the upper arm to the height of the installation surface	5mm
Distance from installation surface to upper plane of working space	442mm
Distance from the reducer shaft center to the upper plane of the working space	319mm
Total height of the upper and lower limits of the working space	153mm
Height of the cylindrical part of the working space	100mm
Height of the conical frustum part of the working space	40mm
Transition diameter of the conical column in the working space	150mm
Bottom diameter of the conical column in the working space	50mm
Diameter of the circular table part of the working space	360mm
Min. installation size of the robot body	700mm



*: Any changes resulting from upgrading our products will not be notified separately.