

Python-series SCARA Robot

Python550F-B6

With superior speed, accuracy, linearity, and verticality performance, it can quickly and precisely complete tasks such as gluing, assembly, transfer, and packaging.

Applicable industries
Transportation and loading/unloading, dispensing, gluing, assembly and inspection processes in electronics, food, medicine, daily chemicals, and semiconductors.

Product features

Rated load	3kg
Max. load	6kg
Number of axes	4
Installation type	Hoisting



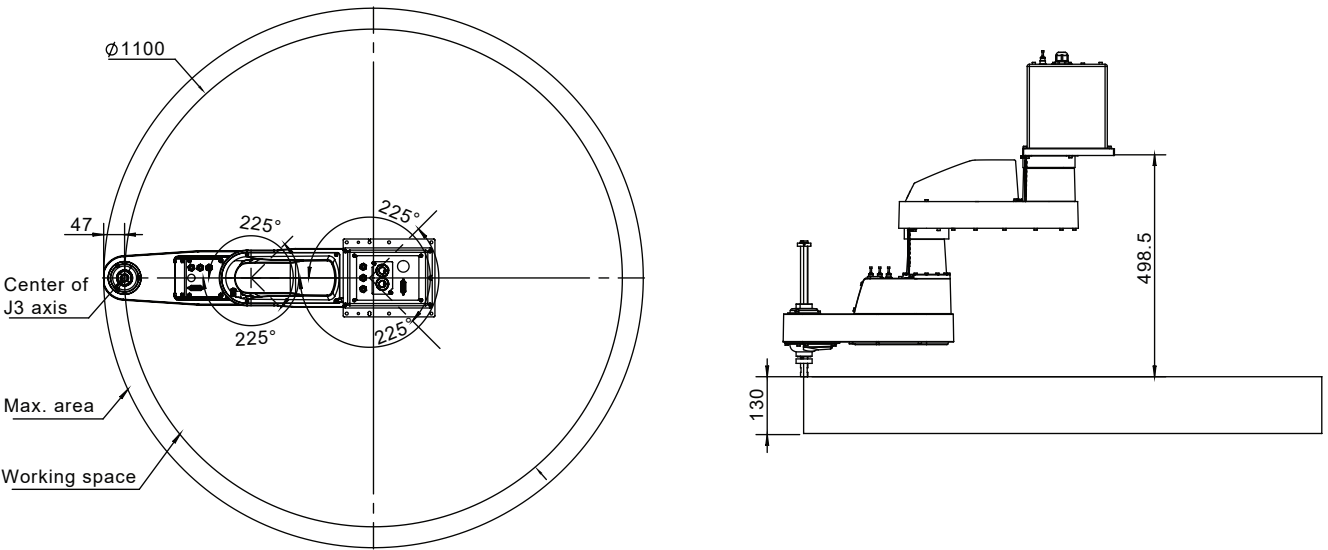
Specification

Python550F-B6		
Robotic arm length	Robotic arms 1 & 2	550mm
	Robotic arm 1	275mm
	Robotic arm 2	275mm
Max. operating speed	Joints 1 & 2	7400mm/s
	Joint 3	1100mm/s
	Joint 4	2600°/s
Repeat positioning accuracy	Joints 1 & 2	±0.02mm
	Joint 3	±0.01mm
	Joint 4	±0.01°
Joint 4 allowable inertial torque	Rated	0.005kg·m ²
	Max.	0.05kg·m ²
Working range	Joint 1	±225°
	Joint 2	±225°
	Joint 3	130mm
	Joint 4	±720°
25/305/25	0.1kg	/
	3kg	0.5s
	6kg	0.52s
Power supply voltage	Single-phase AC 220 V-240 V, 50/60 Hz	
Rated power	1.3KW	
Ambient temperature	0-45°C	
Relative humidity	5-95%	
Degree of protection	IP54	
Installation aperture	190x160mm; 6-φ6.5	
Electrical interface	10-channel custom I/O	
Airway	φ4*3	
Weight	20 kg (excluding cables and racks)	
I/O interface	4-channel configurable digital I/O 8-channel universal digital I/O (8 additional I/O channels can be added) 2-channel encoder input	
Ethernet	1	
USB	2	
RS232\RS485	1	
Communication protocol	Modbus-RTU/TCP、Socket	

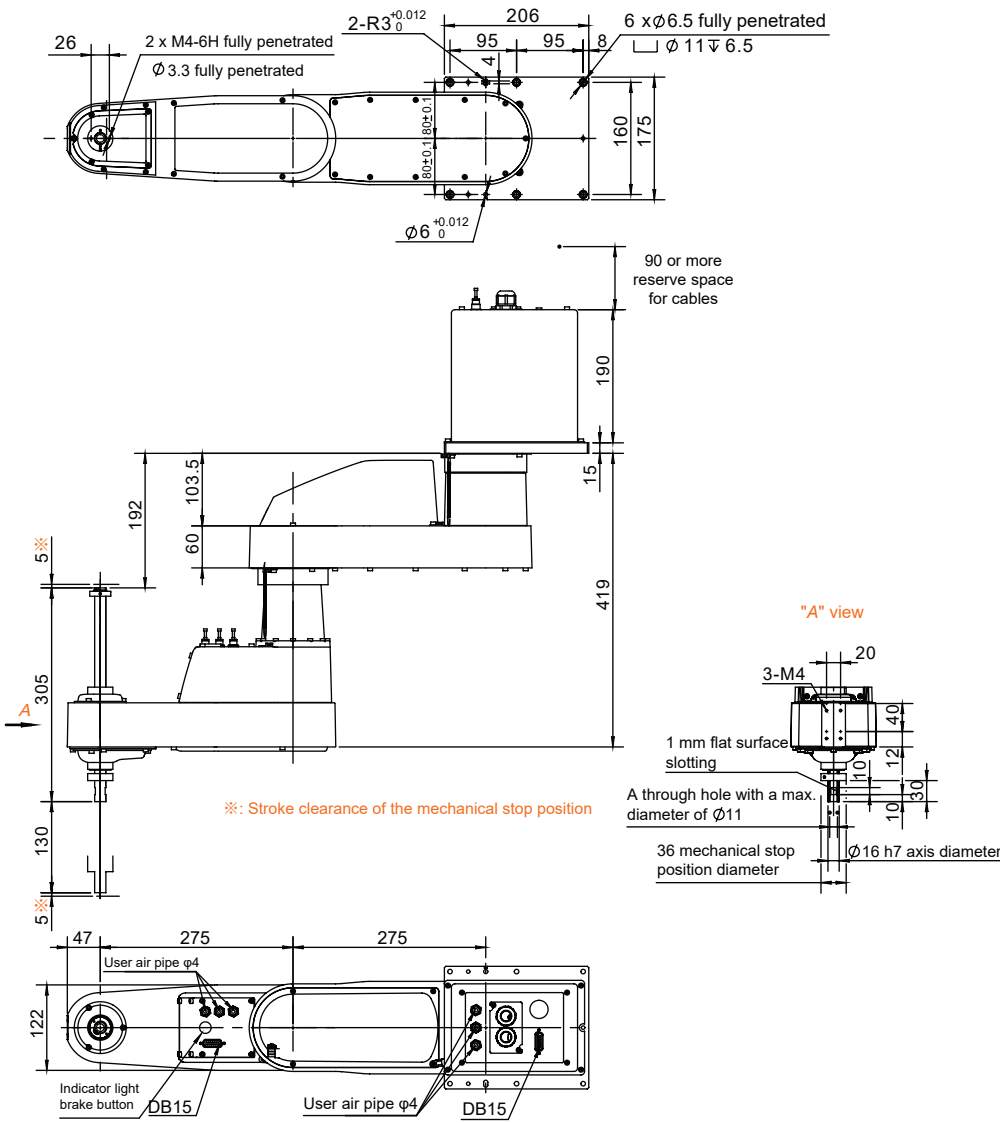
*: For specific requirements regarding line selection, interface configuration, and other optional needs, please consult the technicians of RobotPhoenix.



Working range (unit: mm)



Installation size (unit: mm)



*: Any changes resulting from upgrading our products will not be notified separately.