

Bat-series Delta Robot

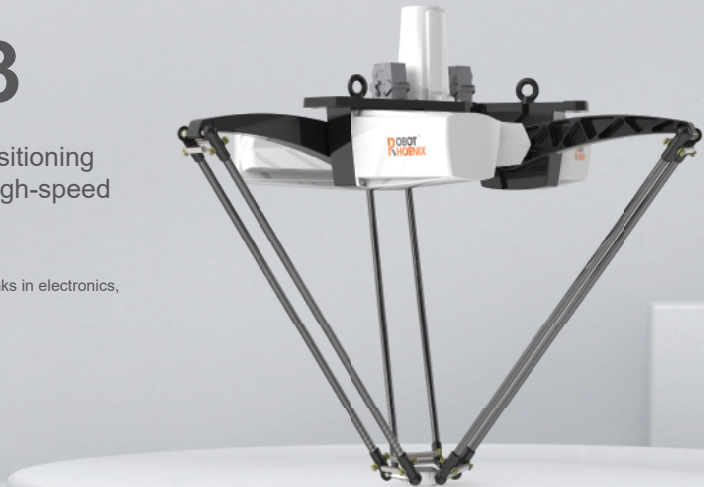
Bat1100C-S3

It features high speed and agility, high positioning accuracy, and strong power, facilitating high-speed and high-precision flexible production.

Applicable industries
Sorting, handling, loading and unloading, boxing, gluing, and other links in electronics, food, medicine, daily chemicals, logistics, and new energy.

Product features

Load	3kg
Working space diameter	1100mm
Repeat positioning accuracy	±0.05mm
Configuration	Standard 3-axis

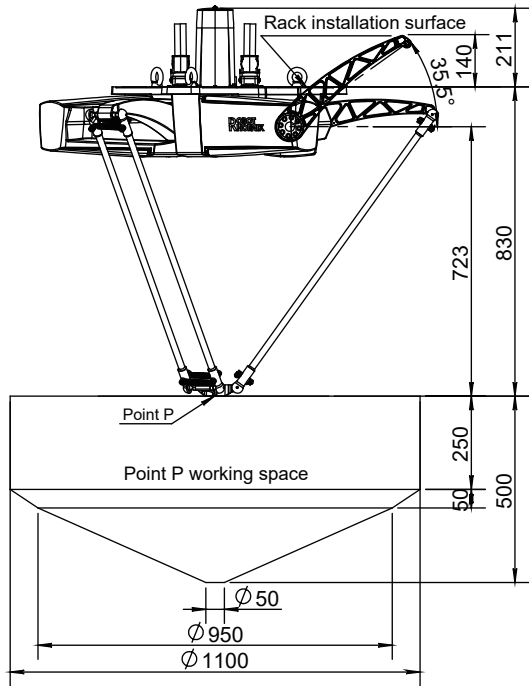


Specification

Bat1100C-S3

Rated load			3kg
Max. load			12kg
Working space diameter			1100mm
Number of axes			3
Repeat positioning accuracy			±0.05mm
25/305/25	0.1kg		0.23s
	1kg		0.24s
	3kg		0.30s
90/400/90	0.1kg		0.30s
	1kg		0.32s
	3kg		0.38s
Power supply voltage			Three-phase AC 380 V±10%, 50/60 Hz
Rated power			3.2KW
Ambient temperature			0-45°C
Relative humidity			5-95%
Degree of protection			IP54
Safety			Equipped with monitoring, emergency stop, and installation functions
Radiation			EMC shielding
Installation method			Hoisting
Weight of the robot body			58kg
I/O interface			4-channel configurable digital I/O 8-channel universal digital I/O (8 additional I/O channels can be added) 2-channel encoder input
Ethernet			2
USB			2
RS232\RS485			1
EtherCAT			1
Communication protocol			Modbus-RTU/TCP、Socket

Working range

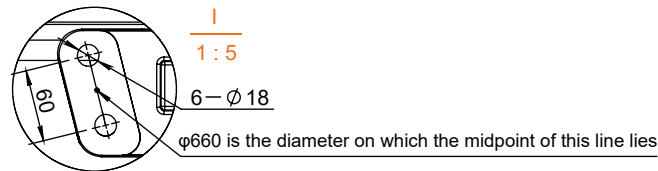
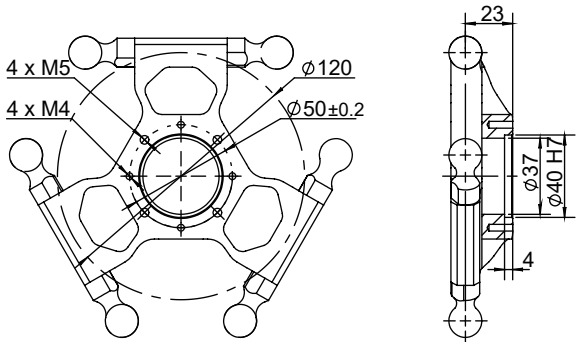
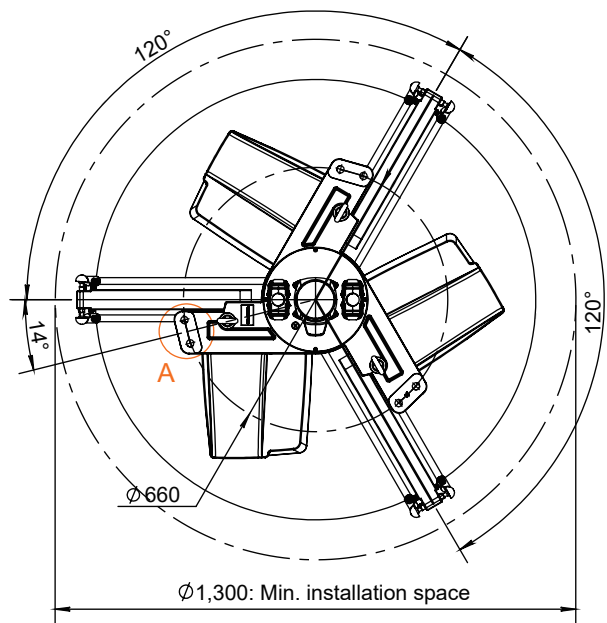


Model

Bat1100C-S3

Distance from installation surface to top of equipment	211mm
Max. upper arm elevation and horizontal plane angle	35.5°
Max. elevation of the upper arm to the height of the installation surface	140mm
Distance from installation surface to upper plane of working space	830mm
Distance from the reducer shaft center to the upper plane of the working space	723mm
Total height of the upper and lower limits of the working space	500mm
Height of the cylindrical part of the working space	250mm
Height of the conical frustum part of the working space	50mm
Transition diameter of the conical column in the working space	950mm
Bottom diameter of the conical column in the working space	50mm
Diameter of the circular table part of the working space	1100mm
Min. installation size of the robot body	1300mm

Installation size



*: For specific requirements regarding line selection, interface configuration, and other optional needs, please consult the technicians of RobotPhoenix.

*: Any changes resulting from upgrading our products will not be notified separately.